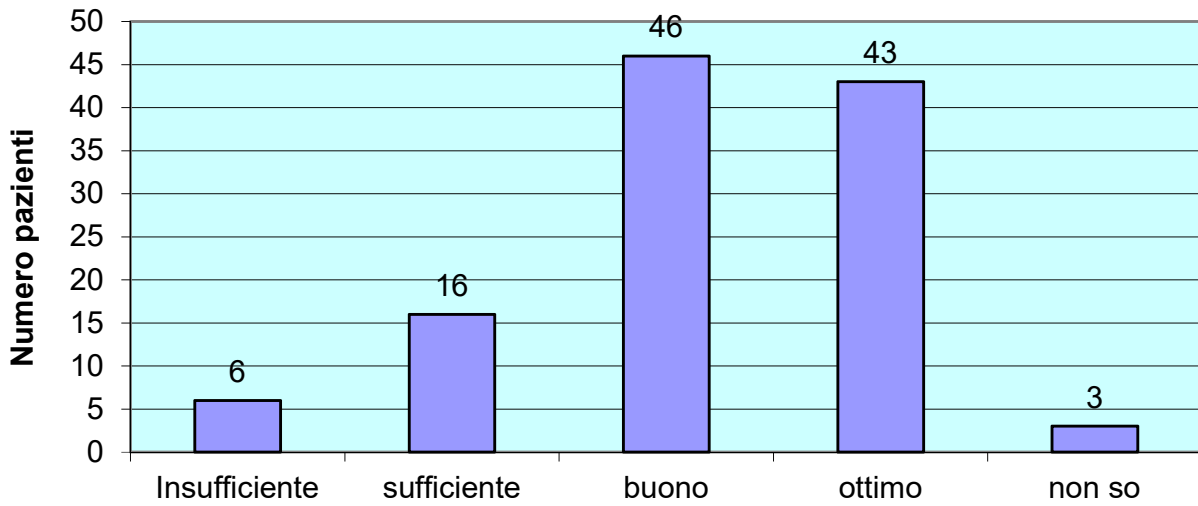
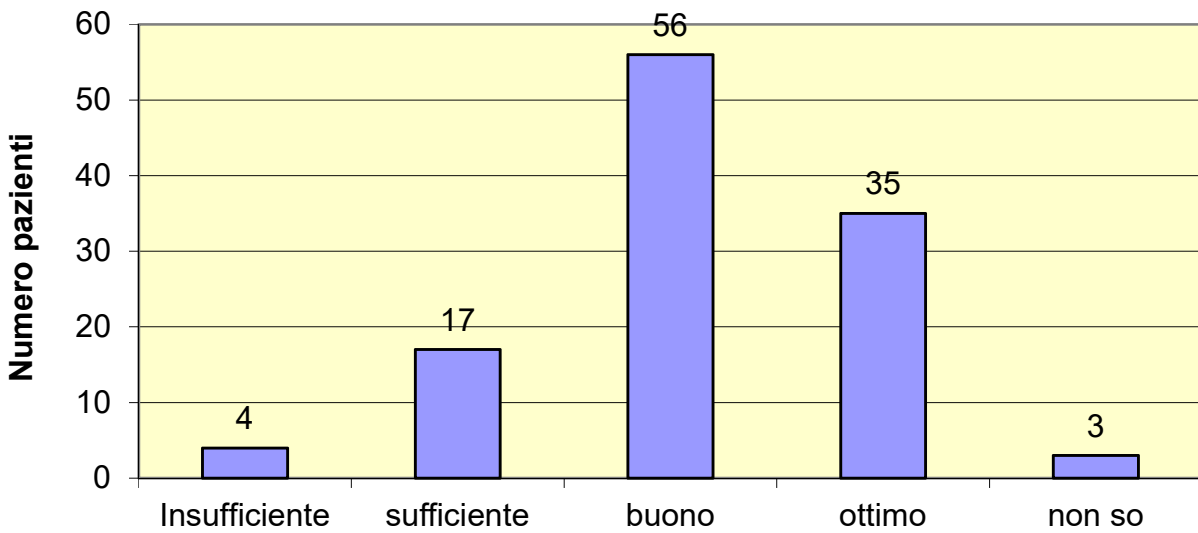


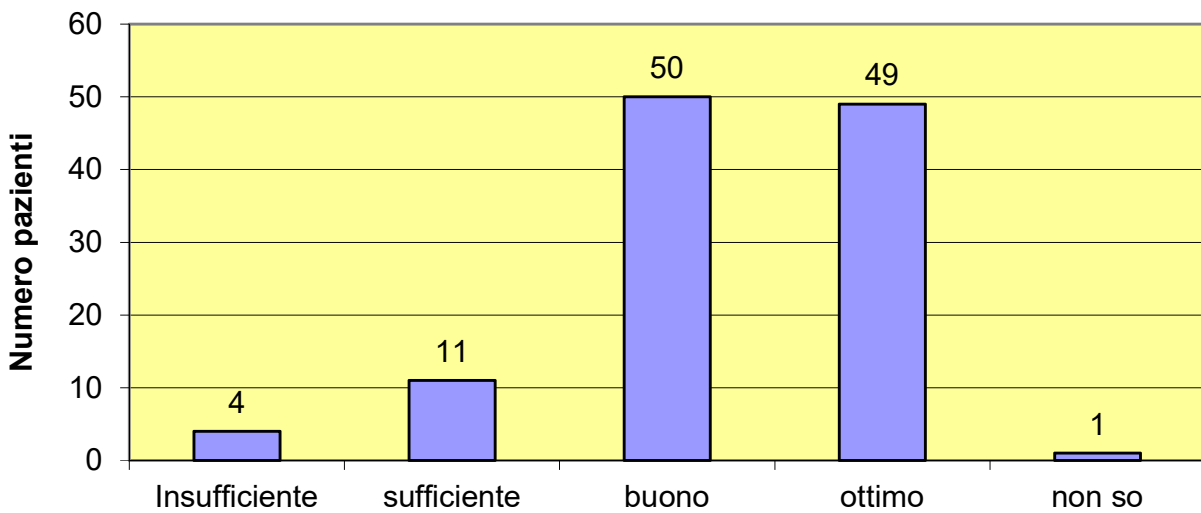
### Giudizio sul tempo d'attesa tra la richiesta e il ricovero



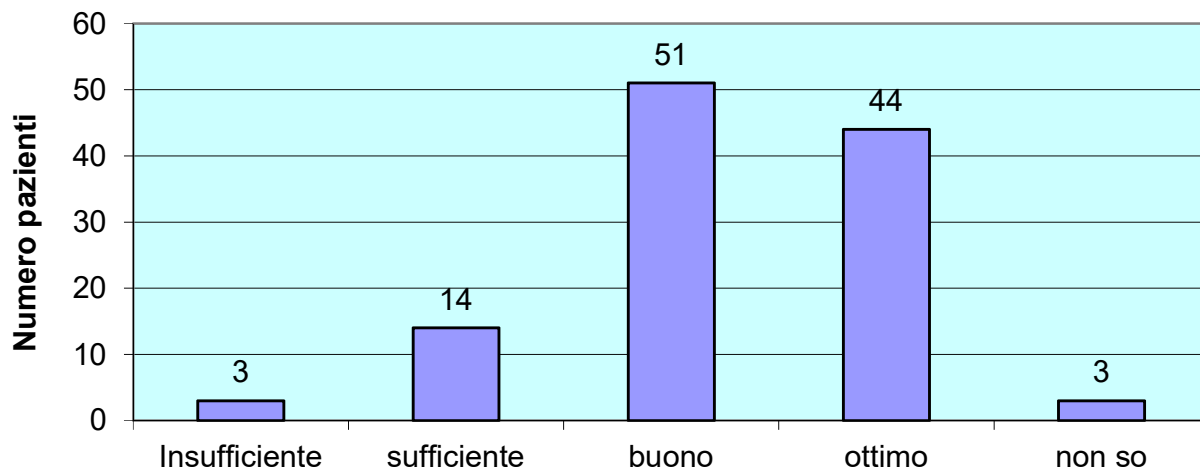
### Giudizio sulle informazioni sul regolamento interno



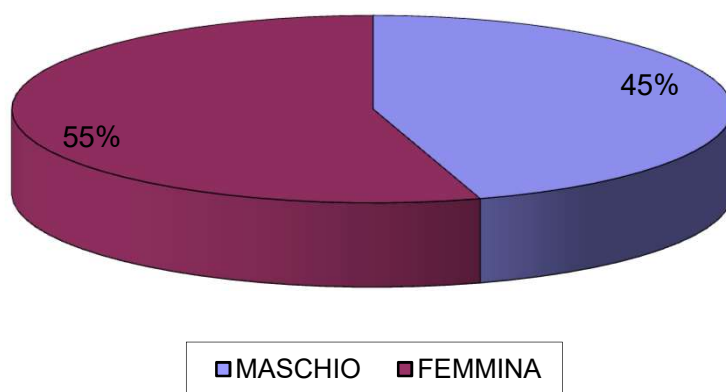
### Giudizio sulla cortesia del personale di accettazione



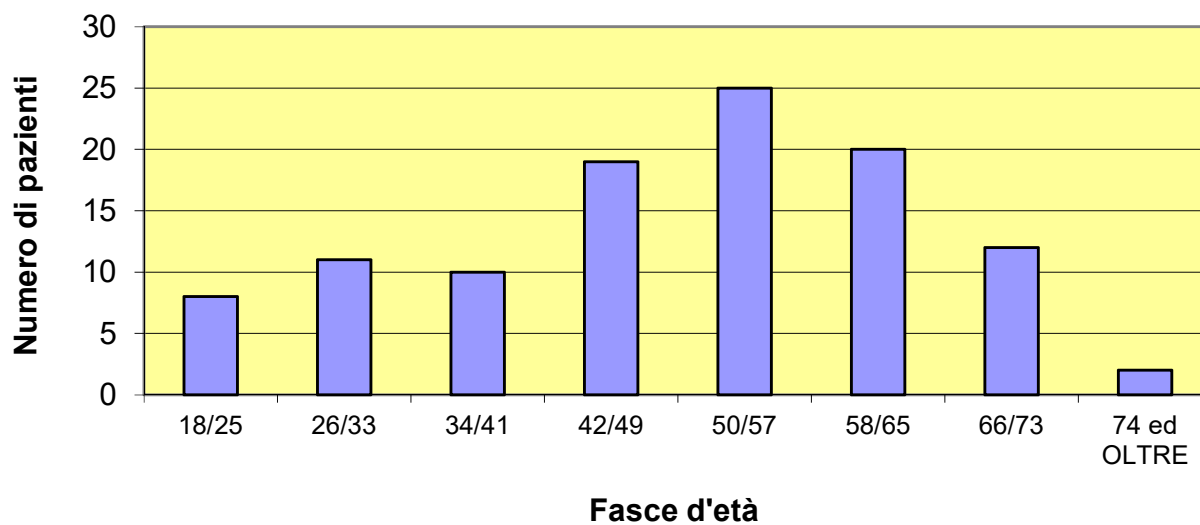
### Giudizio sulla chiarezza delle informazioni offerte dal personale di accettazione



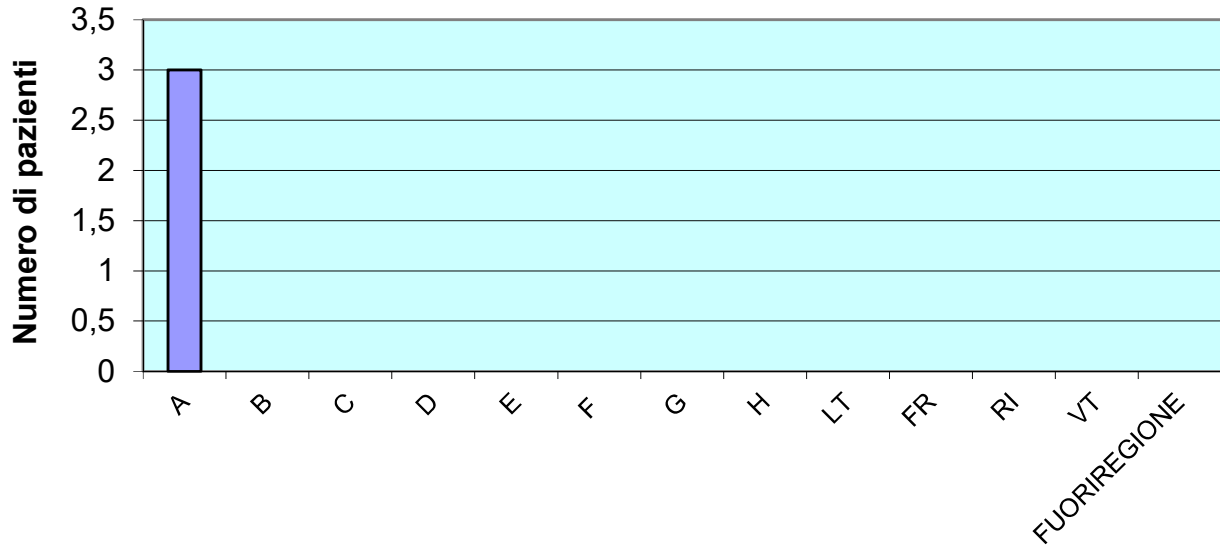
### Maschi Femmine



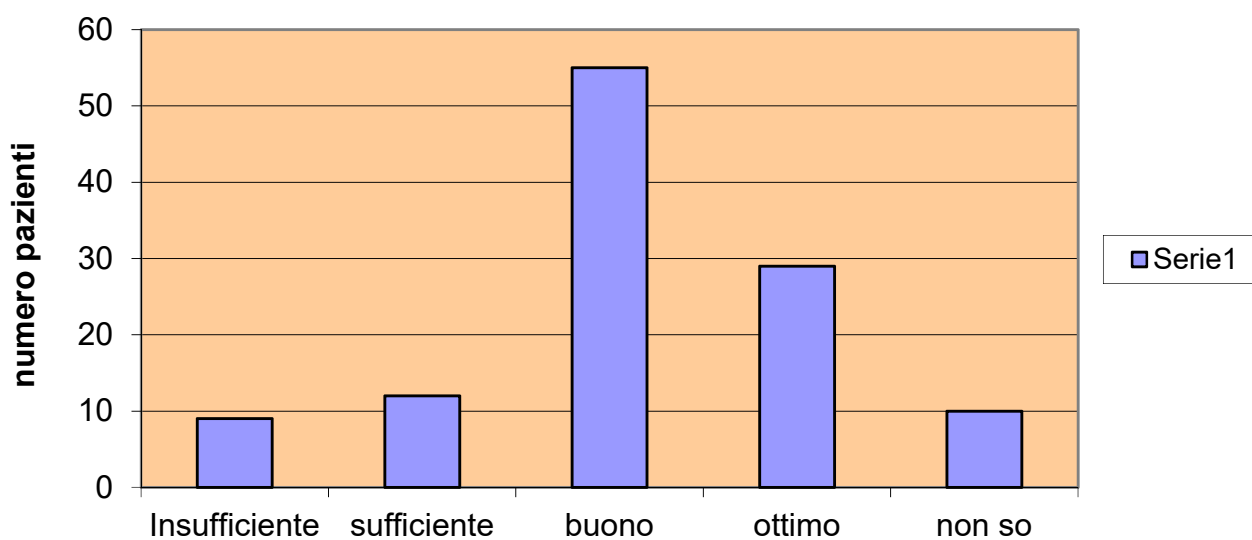
### Età dei Pazienti



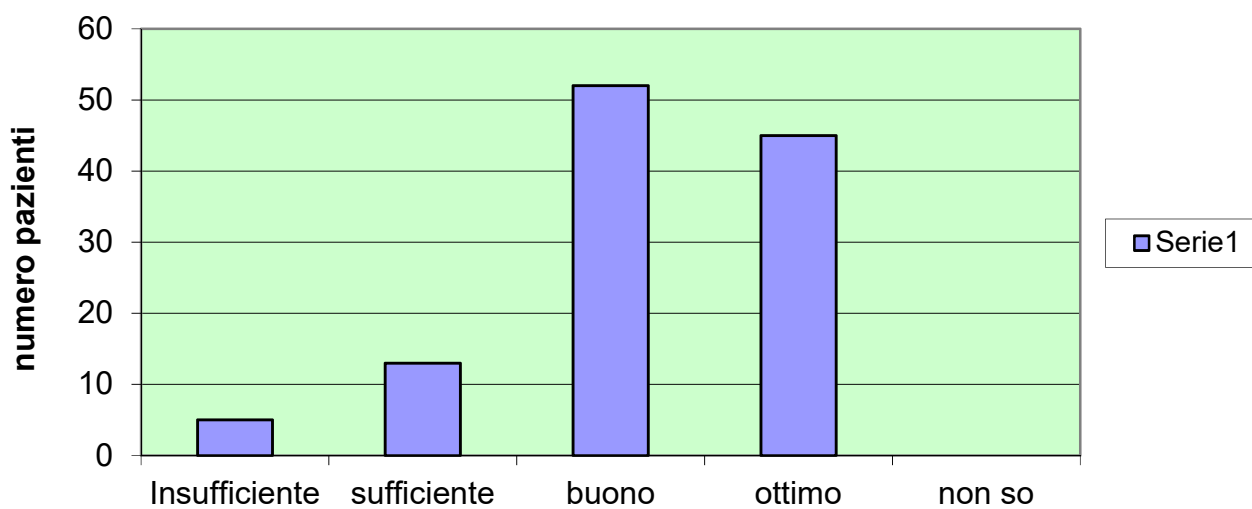
### ASL di Provenienza



### Giudizio orario di visite

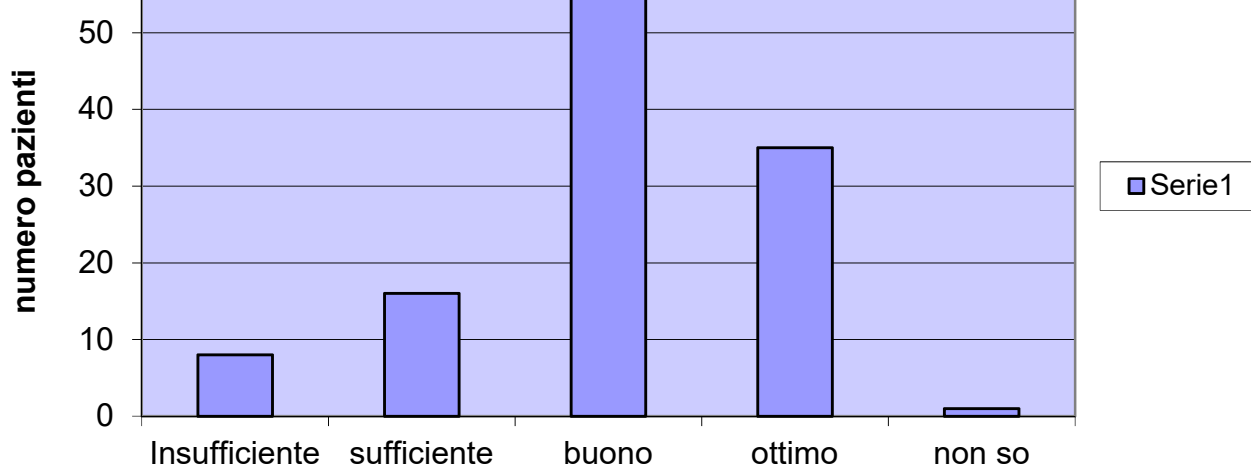


### Giudizio igiene e pulizia ambiente

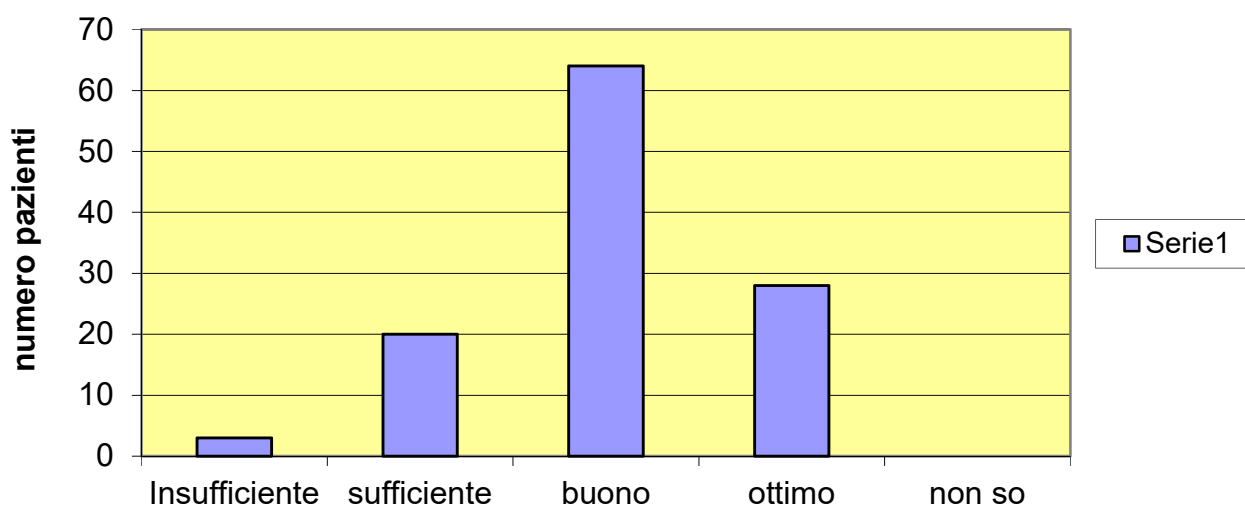


### Giudizio qualità cibo

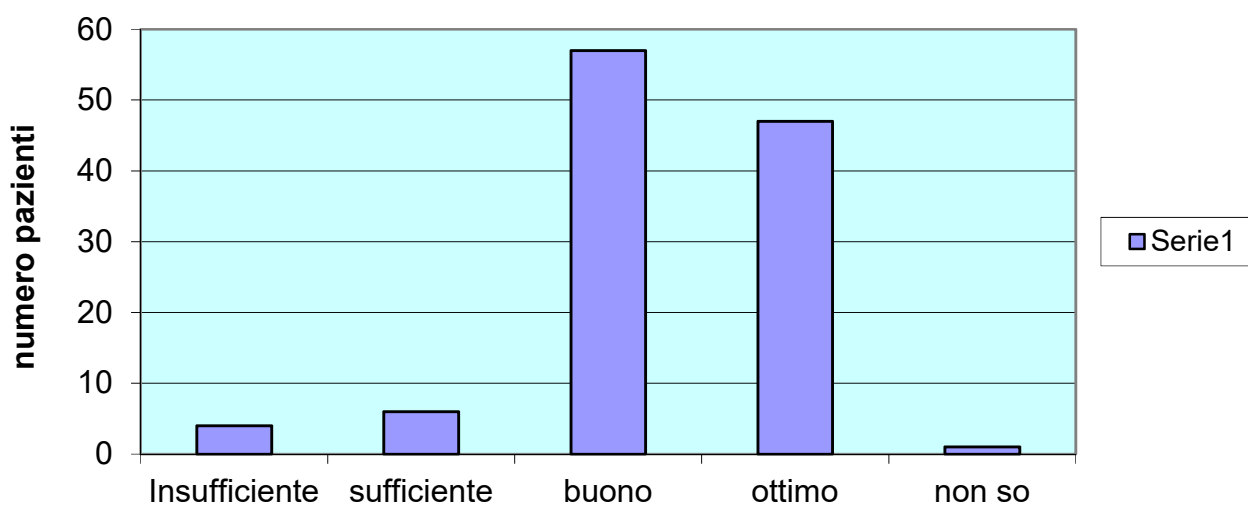




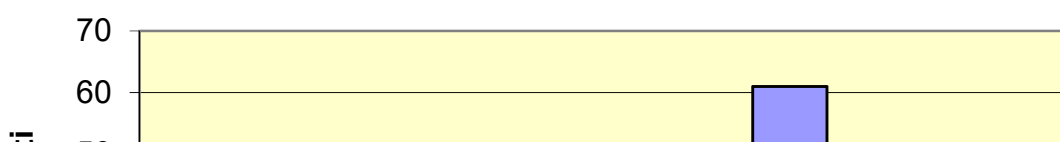
### Giudizio tranquillità all'interno del reparto

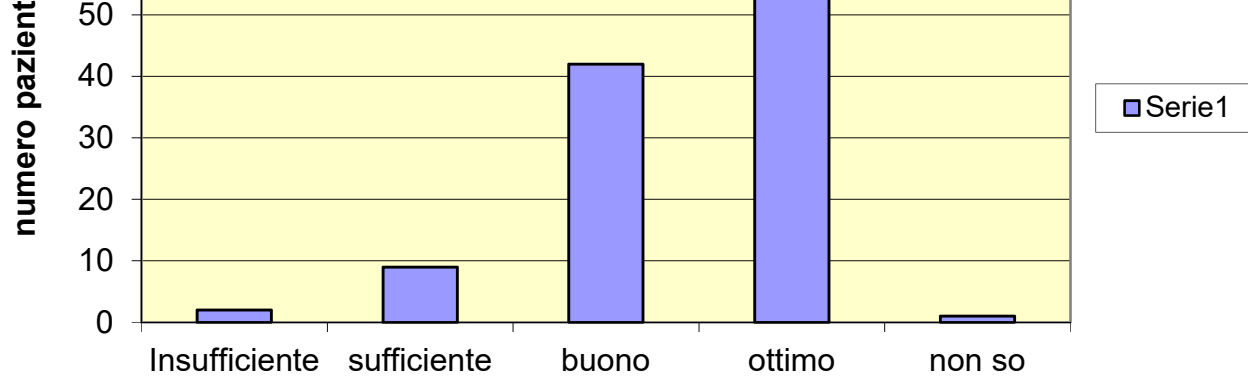


### Giudizio tempestività negli interventi di assistenza

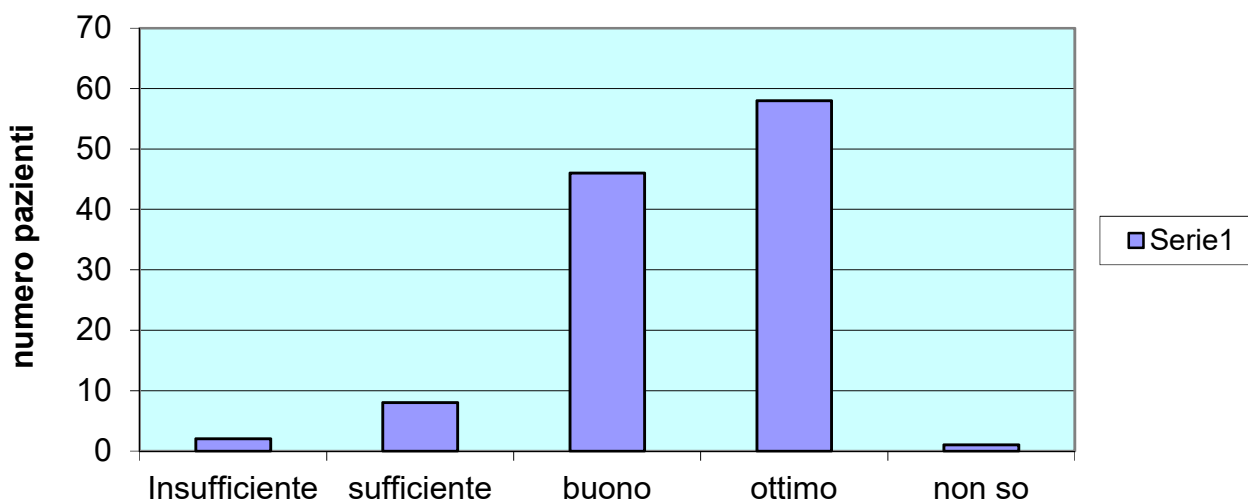


### Giudizio assistenza del personale infermieristico

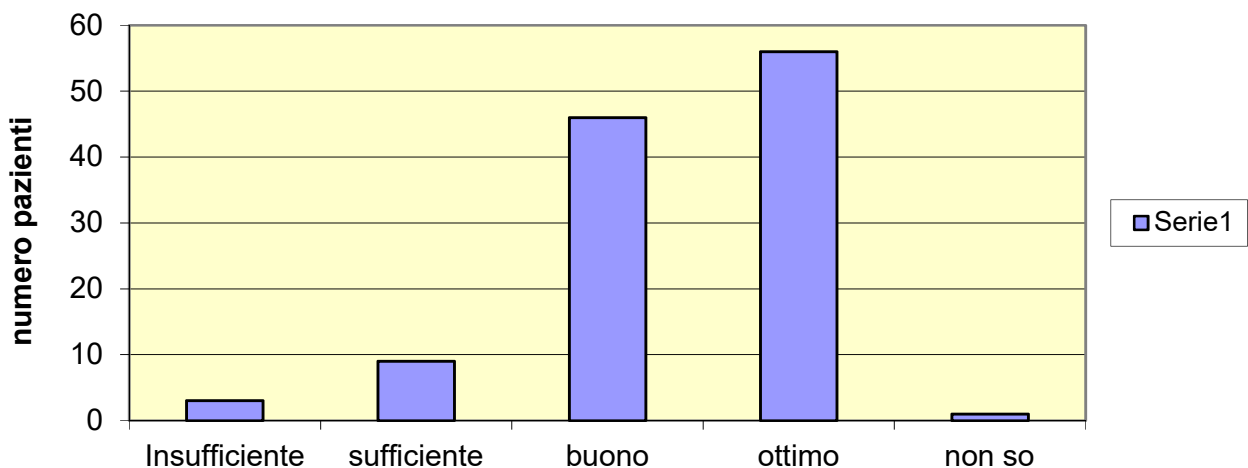




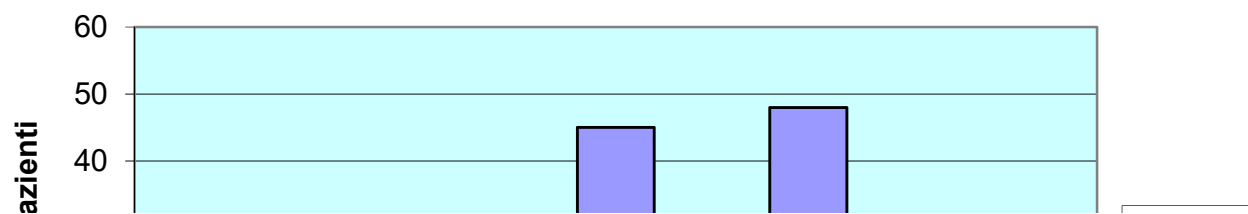
**Giudizio cortesia del personale infermieristico**

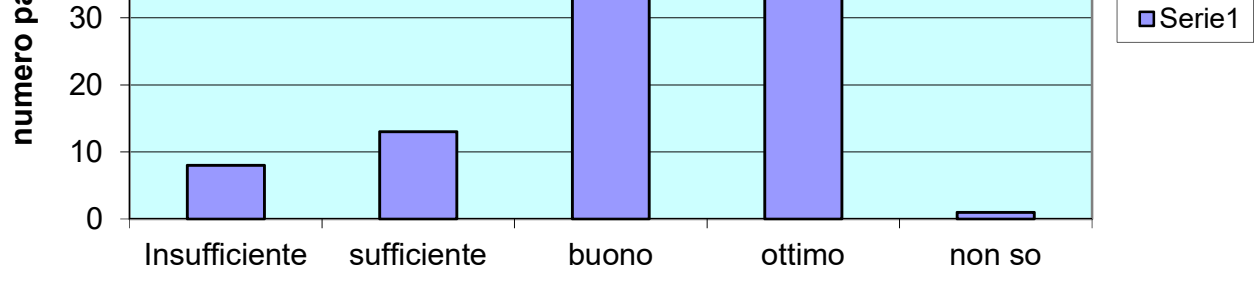


**Giudizio sulla qualità della relazione con i medici**

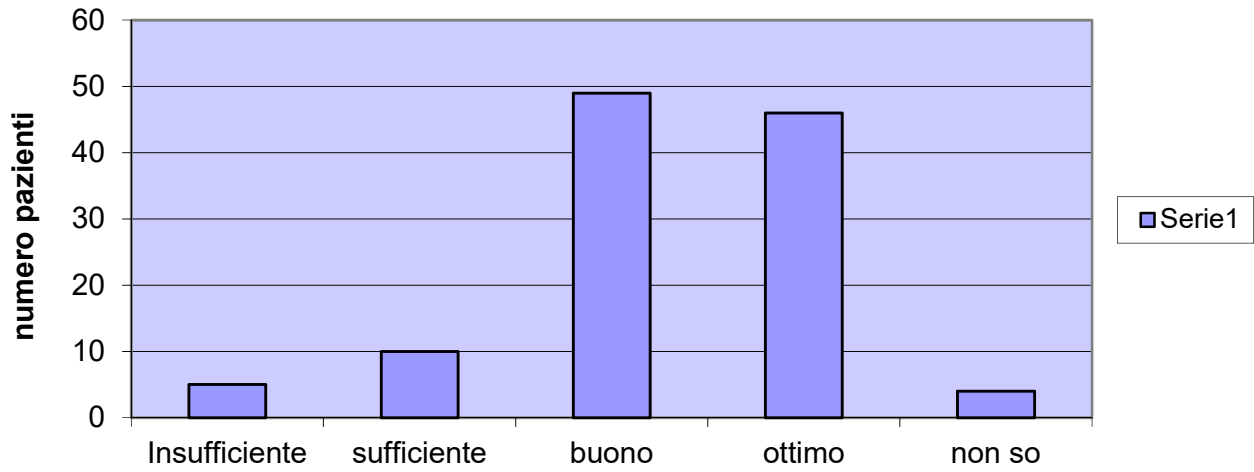


**Giudizio sulla frequenza delle visite mediche**

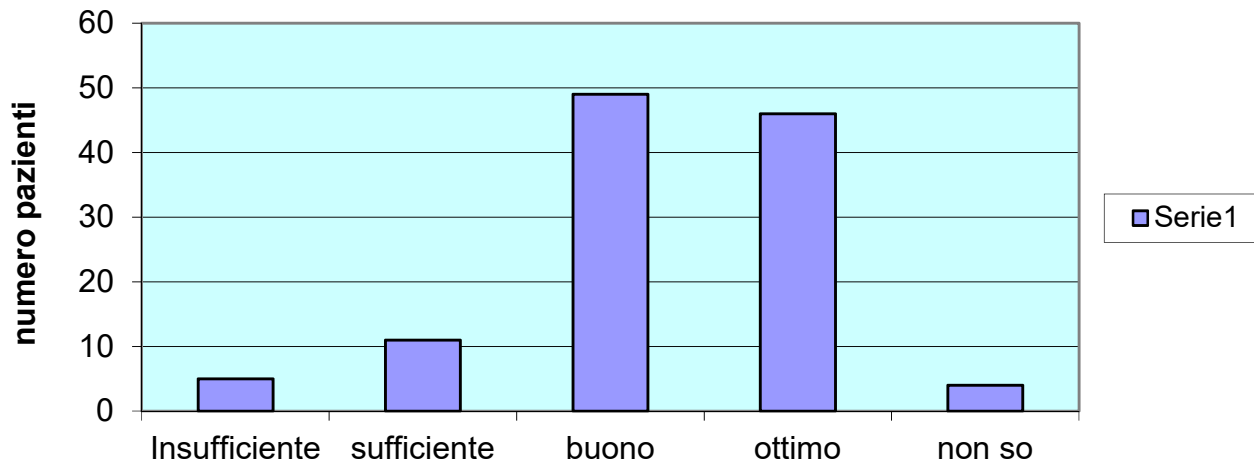




### Giudizio informazioni sullo stato di ricovero



### Giudizio sulla chiarezza delle informazioni sullo stato di ricovero



### Valutazione generale

