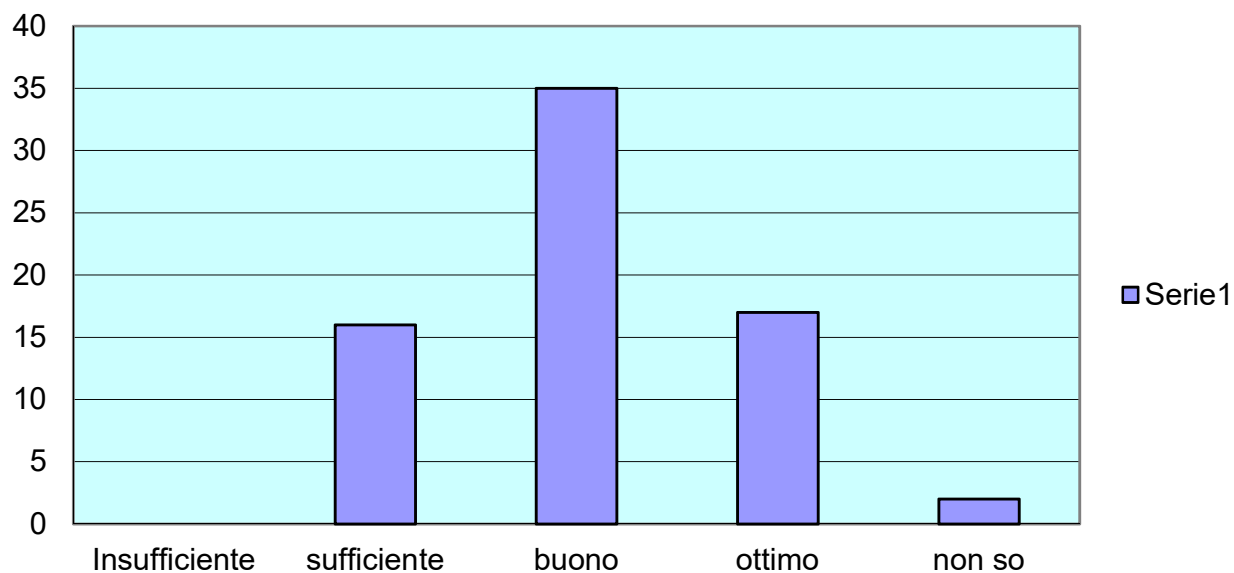
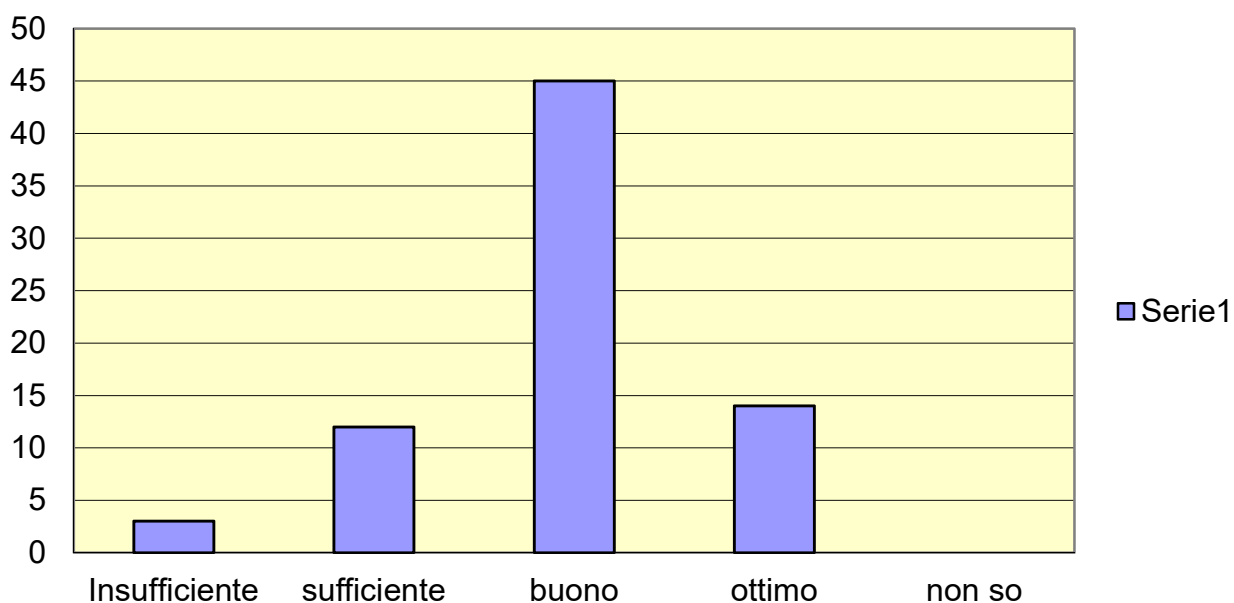


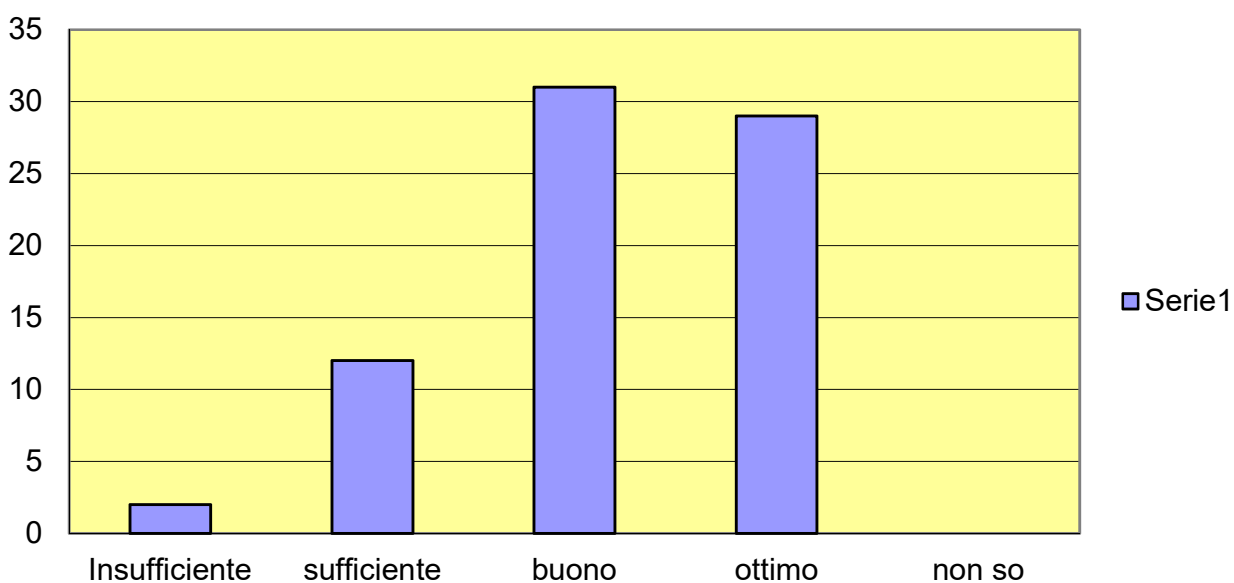
Giudizio sul tempo d'attesa tra la richiesta e il ricovero



Giudizio sulle informazioni sul regolamento interno

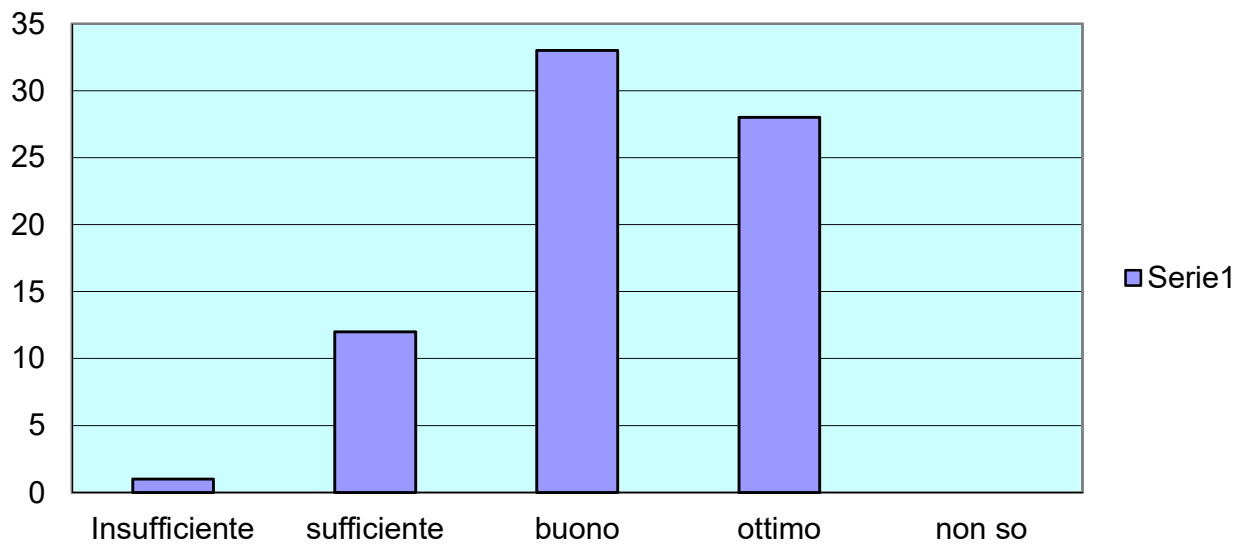


Giudizio sulla cortesia del personale di accettazione

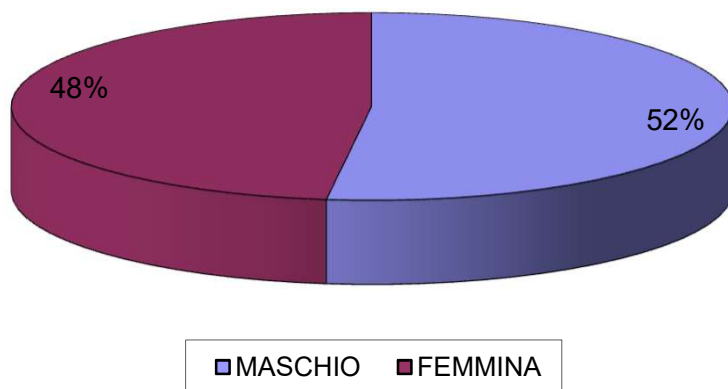


Giudizio sulla chiarezza delle informazioni offerte dal personale

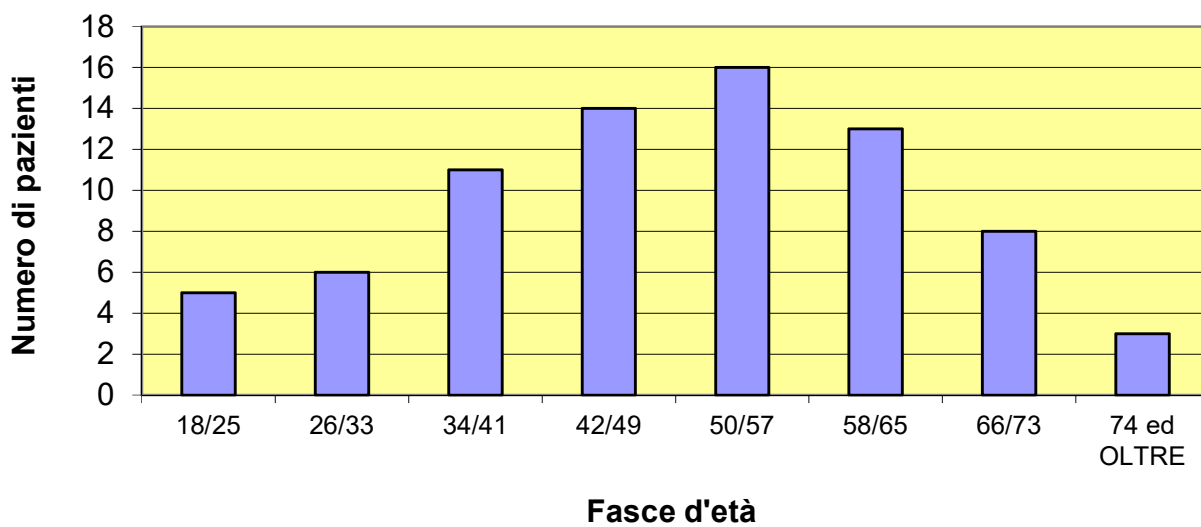
Giudizio sulla chiarezza delle informazioni offerte dal personale di accettazione



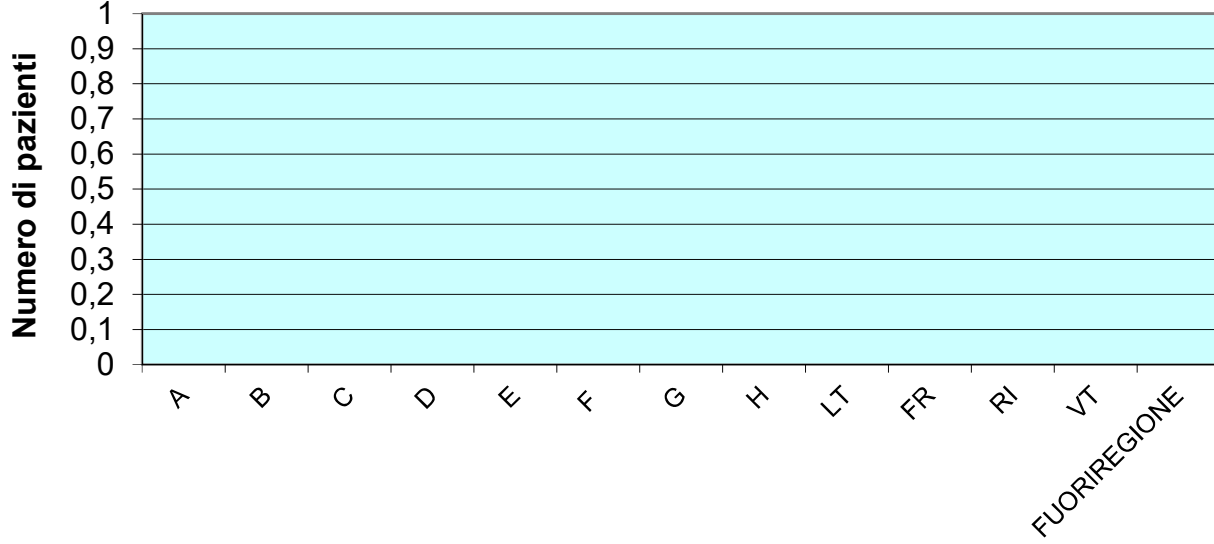
Maschi Femmine



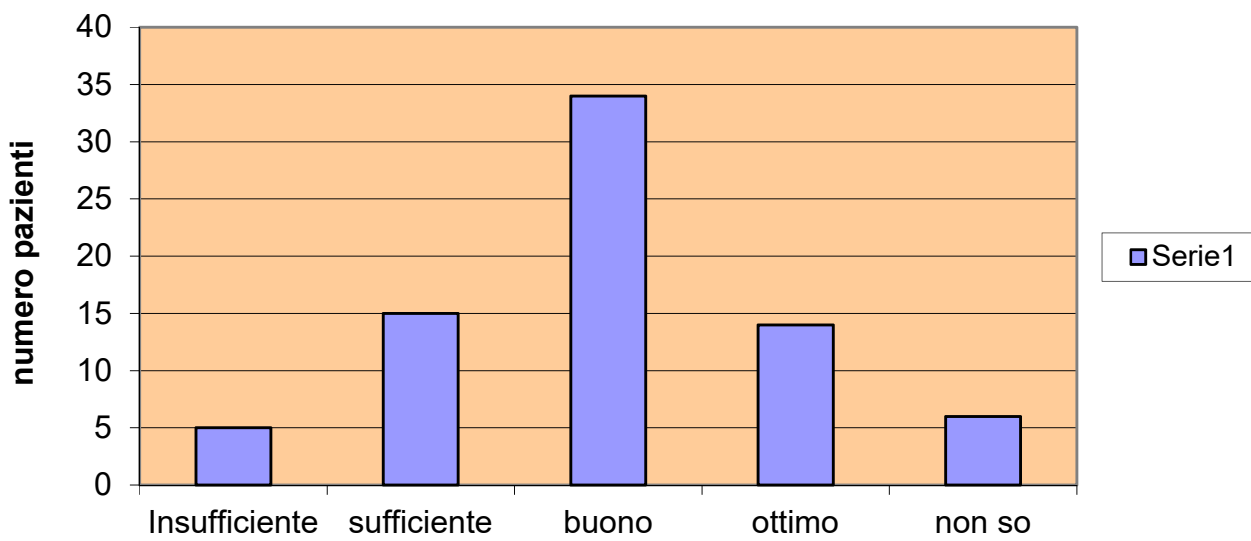
Età dei Pazienti



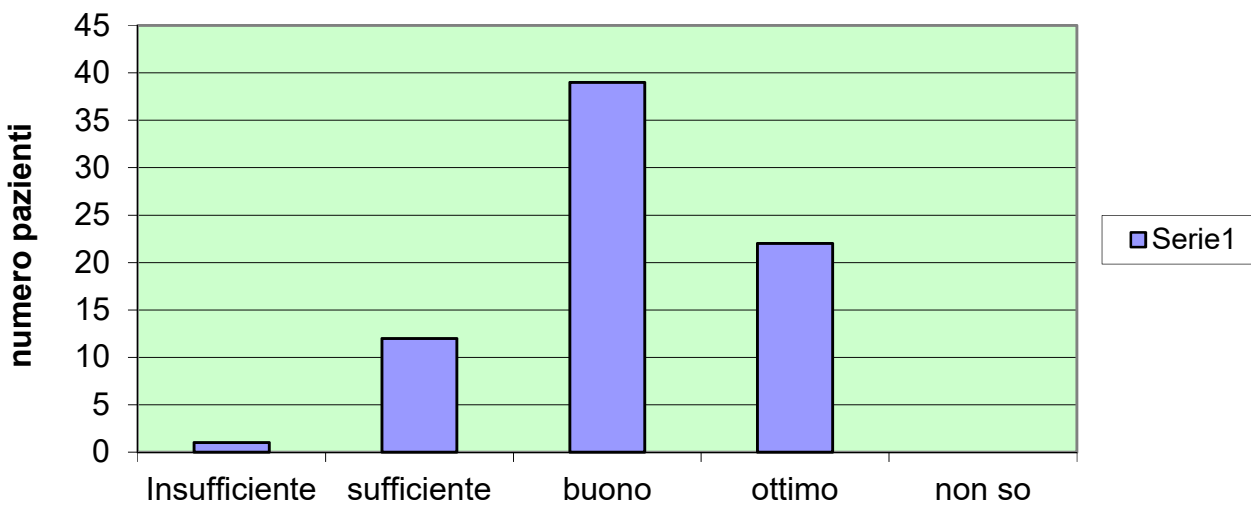
ASL di Provenienza



Giudizio orario di visite

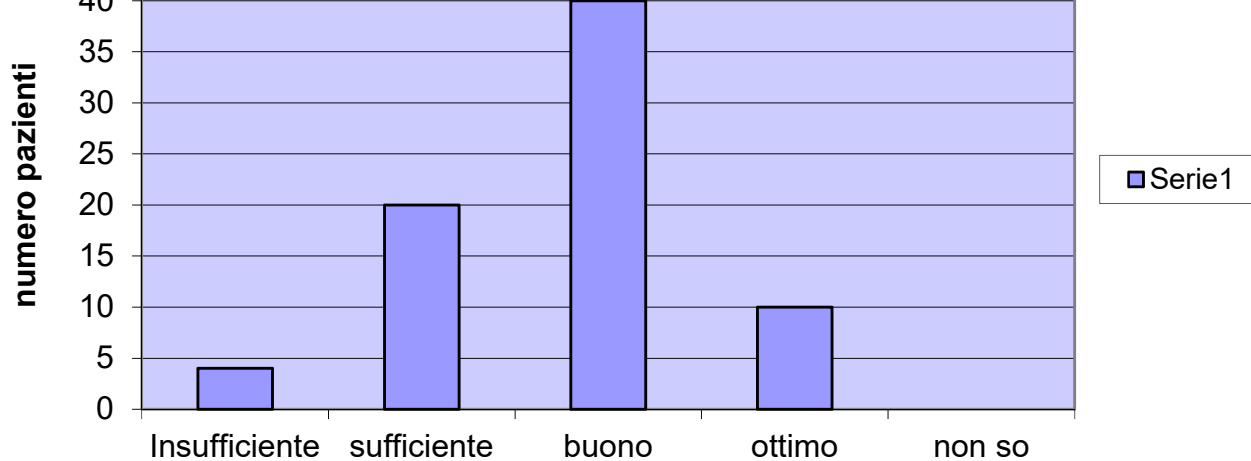


Giudizio igiene e pulizia ambiente

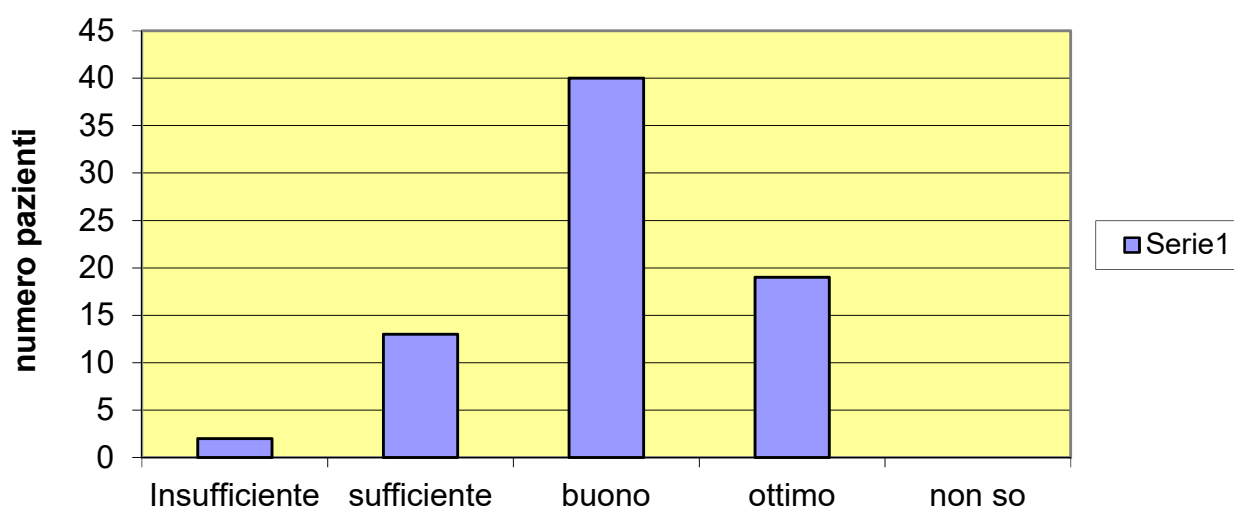


Giudizio qualità cibo

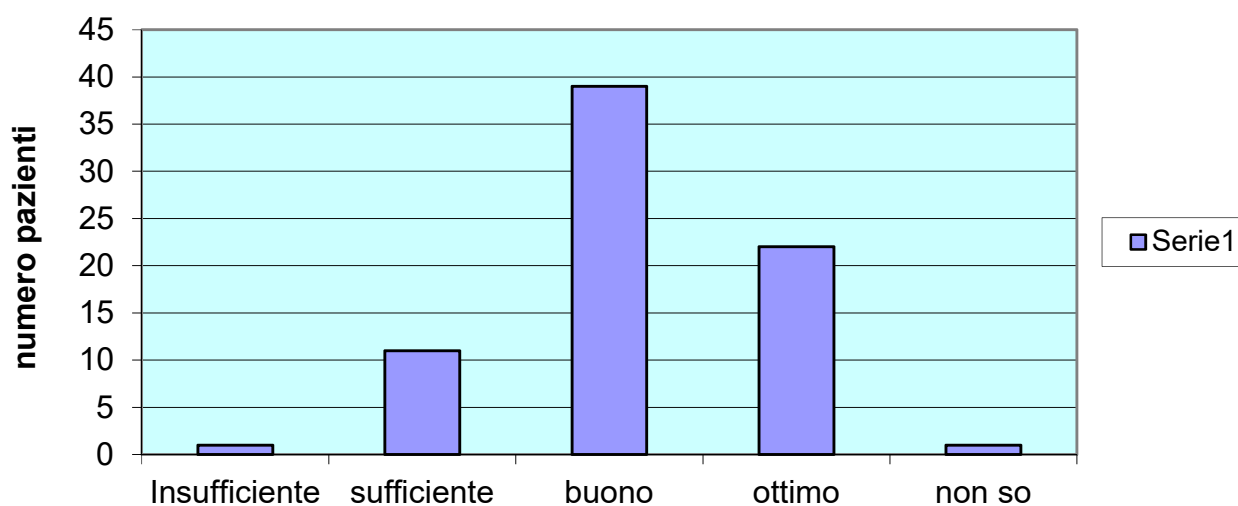




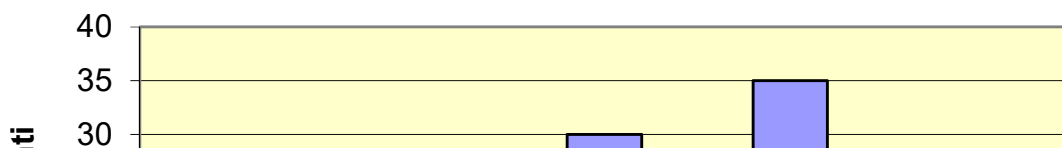
Giudizio tranquillità all'interno del reparto

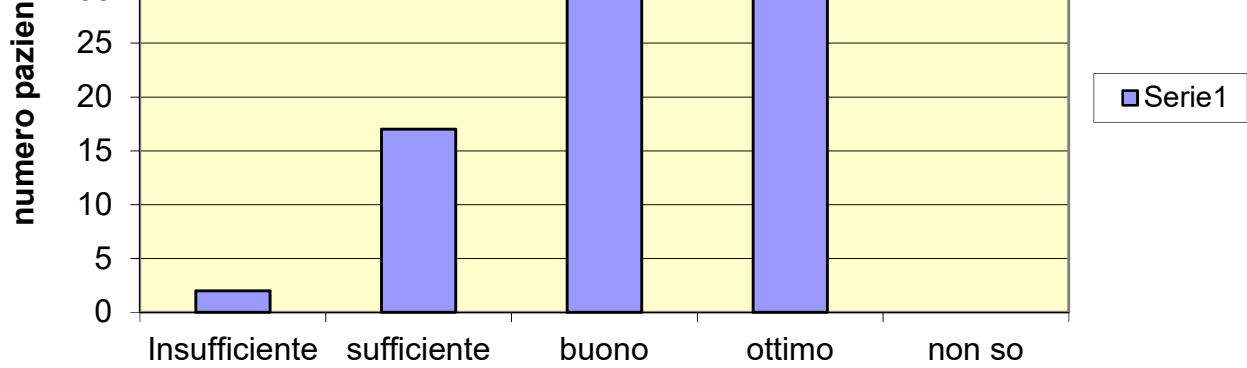


Giudizio tempestività negli interventi di assistenza

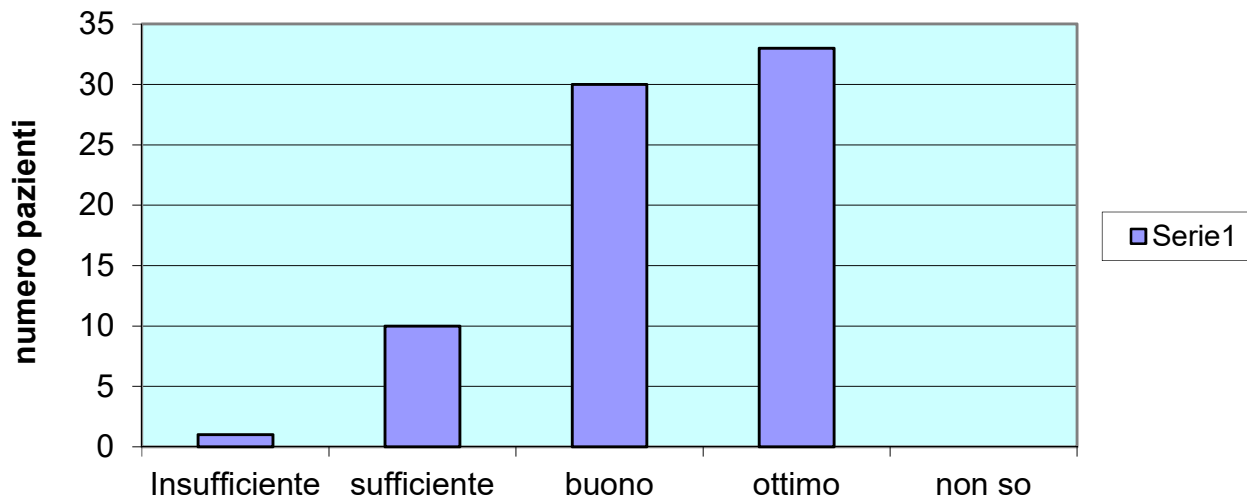


Giudizio assistenza del personale infermieristico

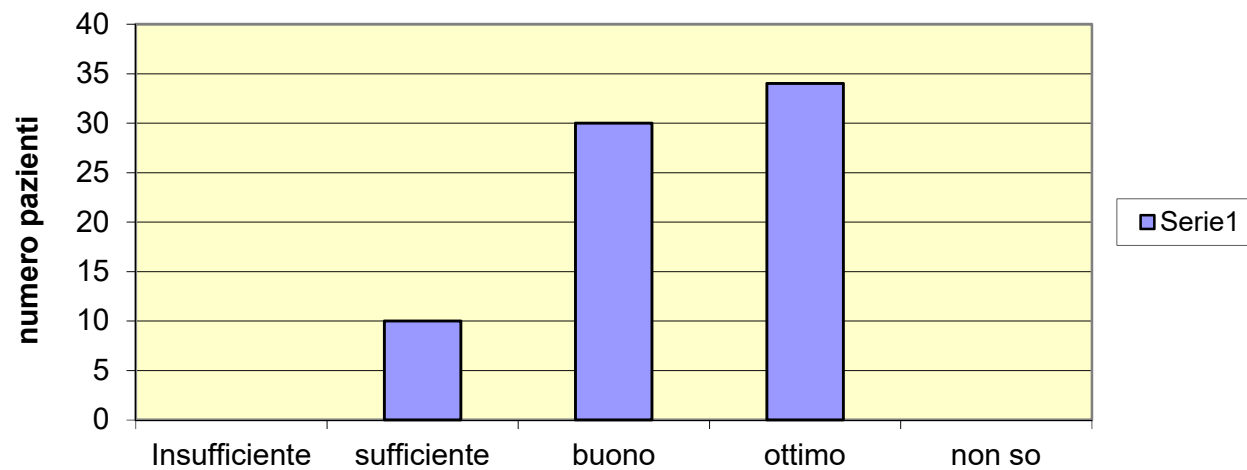




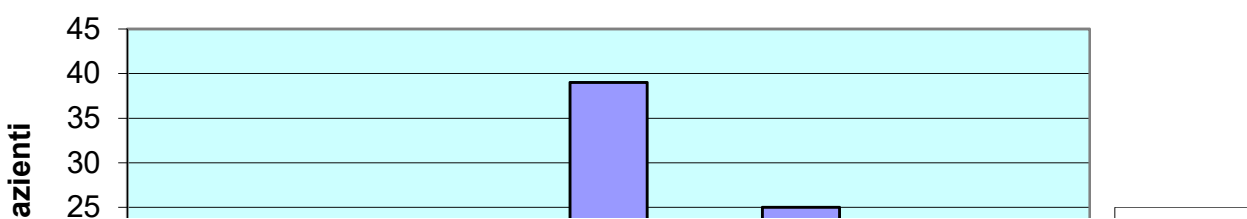
Giudizio cortesia del personale infermieristico

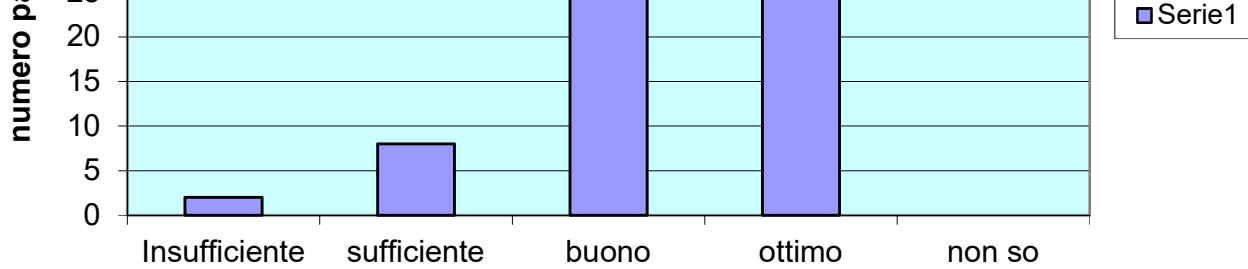


Giudizio sulla qualità della relazione con i medici

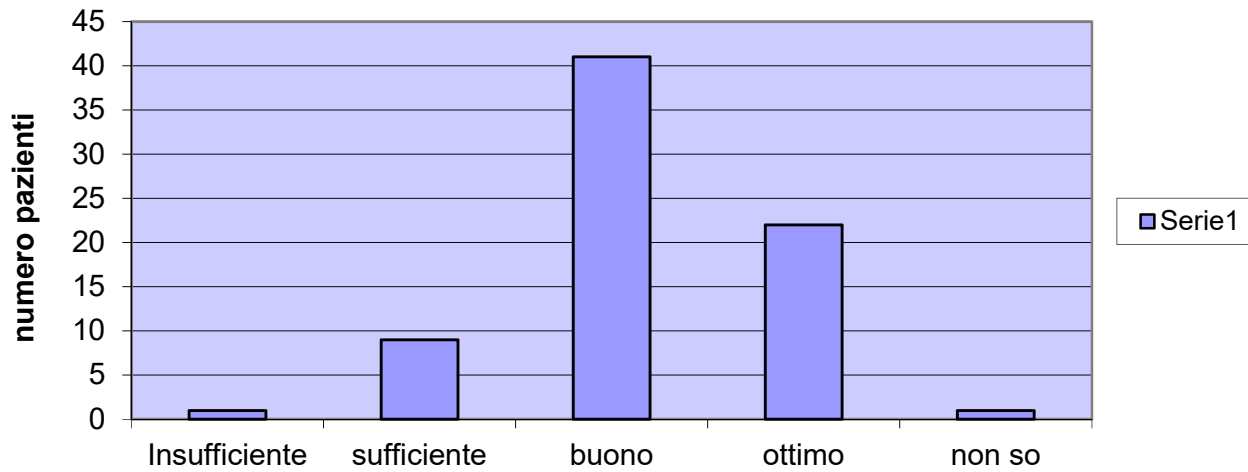


Giudizio sulla frequenza delle visite mediche

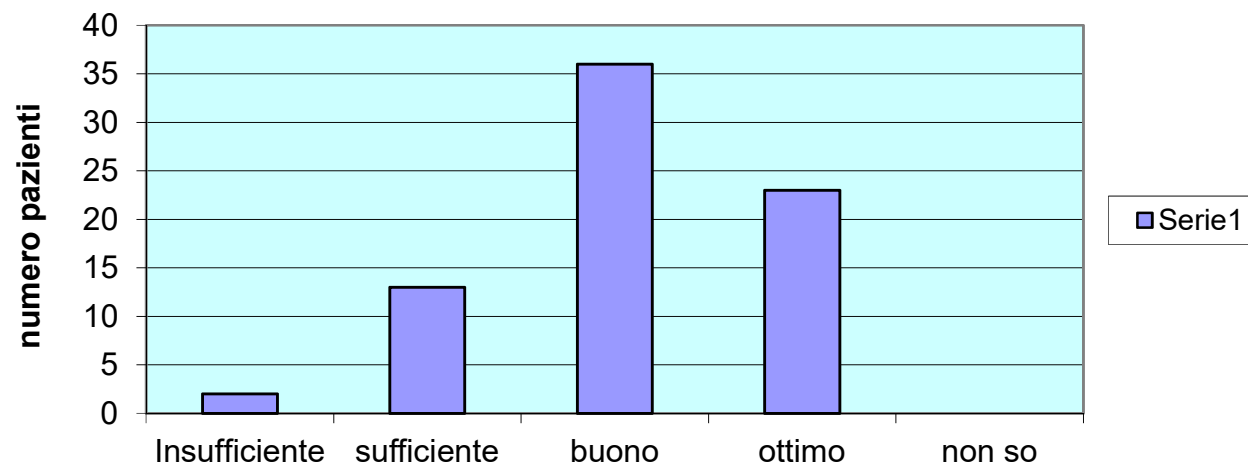




Giudizio informazioni sullo stato di ricovero



Giudizio sulla chiarezza delle informazioni sullo stato di ricovero



Valutazione generale

